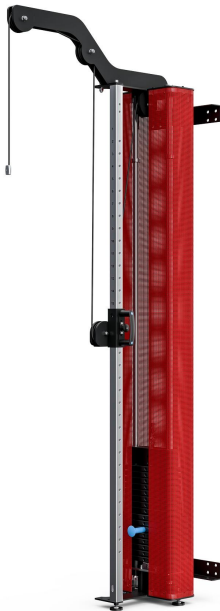


proxomed

S3 MED. vertical

compass MTT



Equipment

- Class I medical device
- Deflection: Direct pull
- Range of rope exits: rope exit approx. 240 cm
- Range of motion: approx. 130 cm vertical
- Ball bearing mounted rollers
- Maintenance-free guide bushes
- Wall bracket
- Lat bar 120 cm

Technical data

- Dimensions (L/W/H):
96/42-68/236 cm
- Training weight: 60 kg
 - 20 kg á 2.5 kg (8x)
 - 40 kg á 5 kg (8x)
- Total weight: 80 kg

Optional

- Additional lat pull-down bar
- Special gallows height S3
- Movement limitation
- Triceps/biceps bar
- Leather MTT foot cuff

Documents

Compass MTT operating instructions

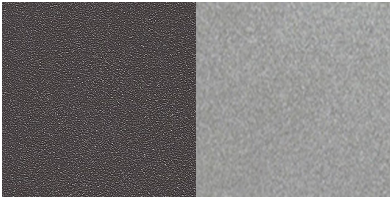
Instructions for use for older or discontinued devices are available free of charge on request from our service department at service@physiomed-group.com. Please state the exact device designation including serial number and your address. We will send them to you.

Product images



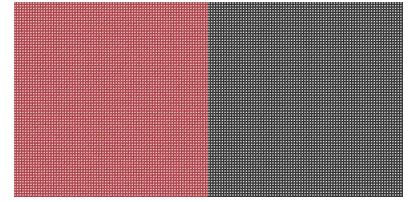
Product colors

Frame

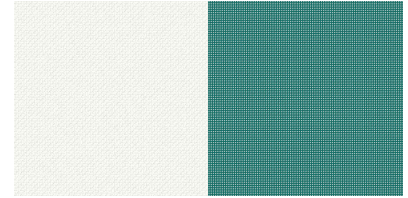


DB 703	DB 701
Micaceous iron ore anthracite	Micaceous iron ore silver

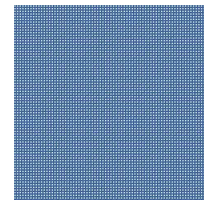
Cladding



Red	Black
-----	-------



White	Green
-------	-------



Blue

Optional equipment WITH SURCHARGE

*The colors shown may differ from the actual colors depending on the monitor and screen resolution.