

ERGOFIT

Abdominal Torsion

VECTOR MED



Equipment

- Class I medical device
- Stepless seat height adjustment
- Variable starting position adjustment from sitting position on both sides
- Fine weight increments in 2.5 kg steps
- Internal weight block
- Protective cover with storage area and cup holder
- Self-explanatory training panel on the device
- Reproducible scaled positioning aids
- Movement limitation
- Adjustment options always marked in blue for easy identification and Operation
- Combination device can be trained to the left and right

Technical data

- Dimensions (L/W/H): 135/100/155 cm
- Weight block: 95 kg (1x7.5 kg + 35x2.5 kg)
- Total weight: 262 kg
- User weight: up to 200 kg

Muscles used

- M. rectus abdominis
- M. obliquus internus abdominis
- M. obliquus externus abdominis
- Pyramidal muscle

Optional

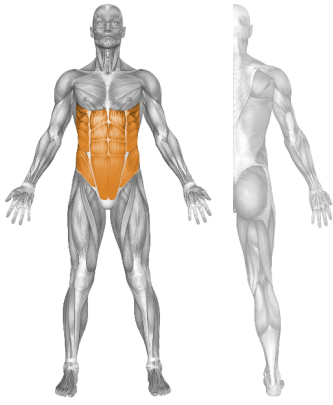
- Indirect LED lighting freely selectable in blue, green, red and white

Documents

[VECTOR operating instructions](#)

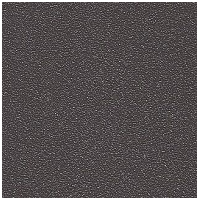
Instructions for use for older or discontinued devices are available free of charge on request from our service department at service@physiomed-group.com. Please state the exact device designation including serial number and your address. We will send them to you.

Product images



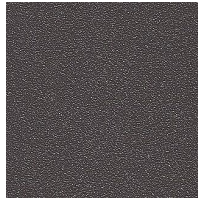
Product colors

Frame

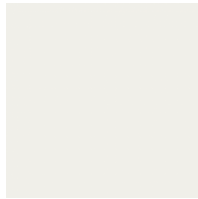


DB 703
Micaceous iron
ore
anthracite

Cladding

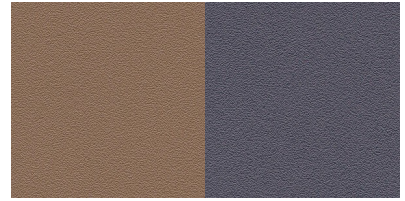


DB 703
Micaceous iron
ore
anthracite



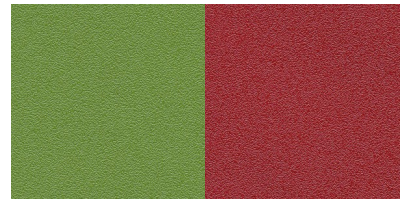
RAL 9016
Traffic white

Upholstery



F6413050
Smoke

F6413076
Anthracite



F6413077
Cactus

F6413079
Cherry



F6413052
Black with blue,
red and green
stitching
options

*The colors shown may differ from the actual colors depending on the monitor and screen resolution.